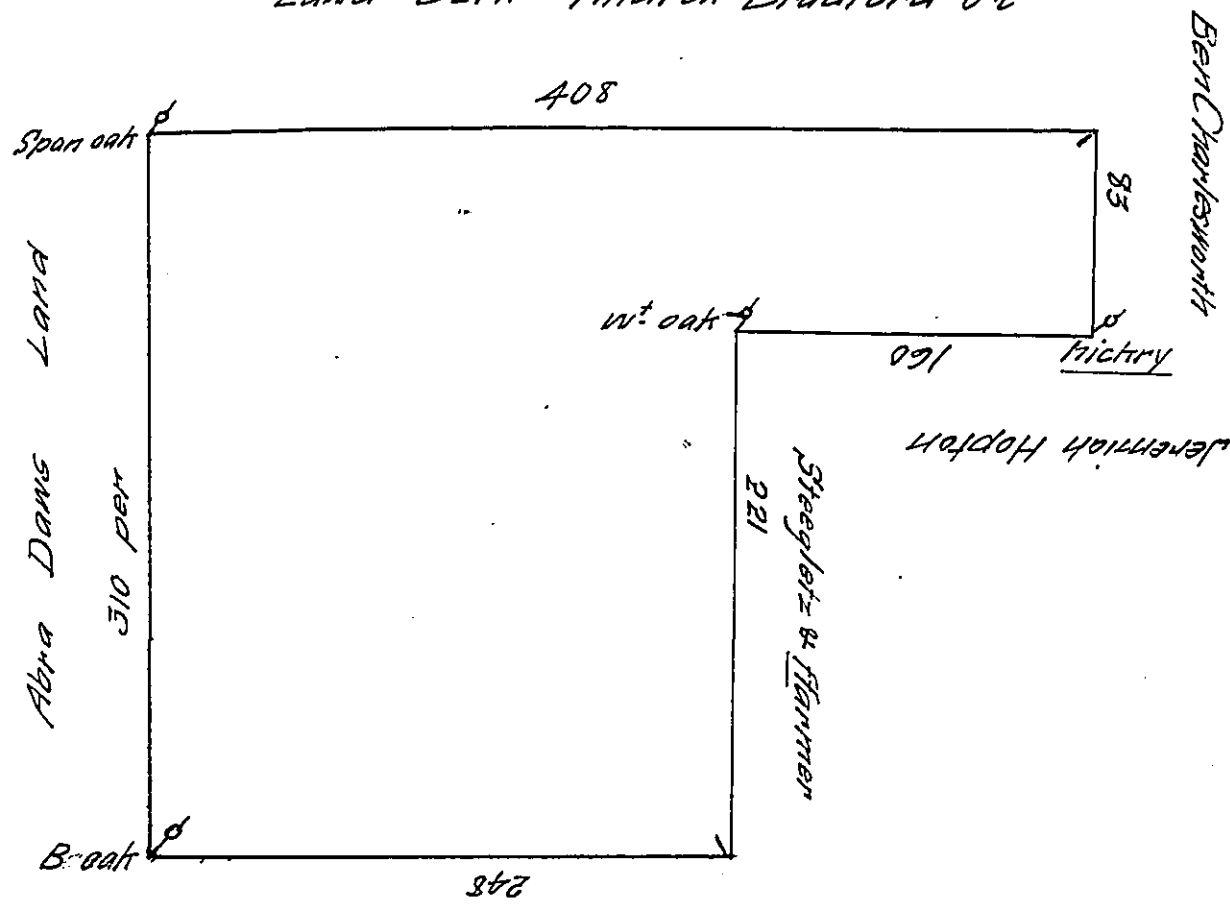


Edward Burk Andrew Bradford &c



A Draught of John Jones Land in the County of Philadelphia beginning at a black oak marked for a Corner thence by land of Robert Asheton North West Two hundred forty Eight perches to a Spanish oak being a Corner of Abraham Daws Land thence by the Same North East three hundred and ten perches to a post thence ^{South East} by Land of Edward Burk Andrew Bradford and another Tract four hundred and Eight perches to a post Thence ^{South West} by Land of Benj^a Charlesworth Eighty nine perches to a hickery saplin Thence North west by Land of Jeremiah Hopton one hundred and Sixty perches to a white oak marked for a corner Thence by Land of the Said Hopton, Nicho Steegletz and Edward farmer Two hundred Twenty one perches to the place of beginning Containing five hundred Sixty Nine Acres Surveyed April the 17th 1724

P Nicho: Scull

of no use see another return of 310^{as}
Nich^o Scull

IN TESTIMONY that the above is a copy of the original remaining on file in the Department of Internal Affairs of Pennsylvania, made conformably to an Act of Assembly approved the 16th day of February, 1833, I have hereunto set my Hand and caused the Seal of said Department to be affixed at Harrisburg, this second day of November, 1910.

Henry Howell
Secretary of Internal Affairs.